

# LESSON 1 Staff/ Notes

Treble Clef



1  
Time Signature

Staff

5 Lines

4 Spaces

Bass Clef



6  
Ledger Lines

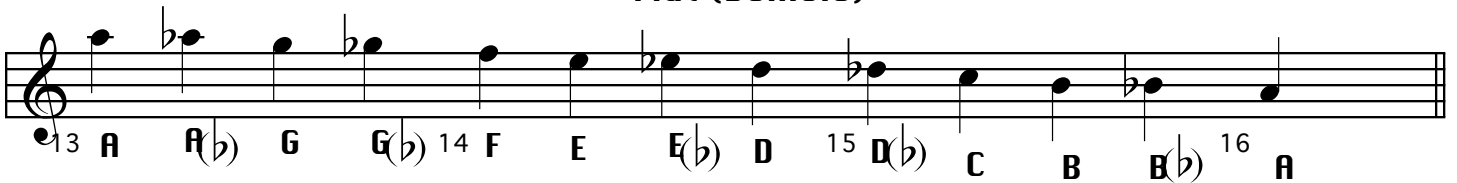
Chromatic Scale

Notes with Stems

Sharp (dieses)



Flat (bemole)



Octave = 12 semi toni

Copy the eight bar melody below exactly as written on the staff below.

Write the letter names of

c d e f g a g.....

Musical staff 17-20 in treble clef, 3/4 time. Notes: 17: C4 (quarter), 18: D4 (quarter), E4 (quarter), F4 (quarter), G4 (quarter), A4 (quarter), G4 (quarter), 19: F4 (quarter), E4 (quarter), D4 (quarter), 20: C4 (quarter), B3 (quarter), A3 (quarter), G3 (quarter), F3 (quarter), E3 (quarter), D3 (quarter), C3 (quarter).

Musical staff 21-24 in treble clef, 3/4 time. Notes: 21: C4 (quarter), D4 (quarter), E4 (quarter), F4 (quarter), G4 (quarter), A4 (quarter), G4 (quarter), 22: F4 (quarter), E4 (quarter), D4 (quarter), C4 (quarter), B3 (quarter), A3 (quarter), G3 (quarter), F3 (quarter), E3 (quarter), D3 (quarter), C3 (quarter), 23: B3 (quarter), A3 (quarter), G3 (quarter), F3 (quarter), E3 (quarter), D3 (quarter), C3 (quarter), 24: B3 (quarter), A3 (quarter), G3 (quarter), F3 (quarter), E3 (quarter), D3 (quarter), C3 (quarter).

Empty musical staff 25-28 in treble clef, 3/4 time.

Empty musical staff 29-32 in treble clef, 3/4 time.

Below is the same melody in bass clef.

Copy it on the following staff. Name the notes

c d e f g a g.....

Musical staff 33-36 in bass clef, 3/4 time. Notes: 33: C3 (quarter), 34: D3 (quarter), E3 (quarter), F3 (quarter), G3 (quarter), A3 (quarter), G3 (quarter), 35: F3 (quarter), E3 (quarter), D3 (quarter), 36: C3 (quarter), B2 (quarter), A2 (quarter), G2 (quarter), F2 (quarter), E2 (quarter), D2 (quarter), C2 (quarter).

Musical staff 37-40 in bass clef, 3/4 time. Notes: 37: C3 (quarter), D3 (quarter), E3 (quarter), F3 (quarter), G3 (quarter), A3 (quarter), G3 (quarter), 38: F3 (quarter), E3 (quarter), D3 (quarter), C3 (quarter), B2 (quarter), A2 (quarter), G2 (quarter), F2 (quarter), E2 (quarter), D2 (quarter), C2 (quarter), 39: B2 (quarter), A2 (quarter), G2 (quarter), F2 (quarter), E2 (quarter), D2 (quarter), C2 (quarter), 40: B2 (quarter), A2 (quarter), G2 (quarter), F2 (quarter), E2 (quarter), D2 (quarter), C2 (quarter).

41 42 43 44

45 46 47 48

**Copy this melody in BASS  
CLEF.  
Name all notes.**

49 50 51 52

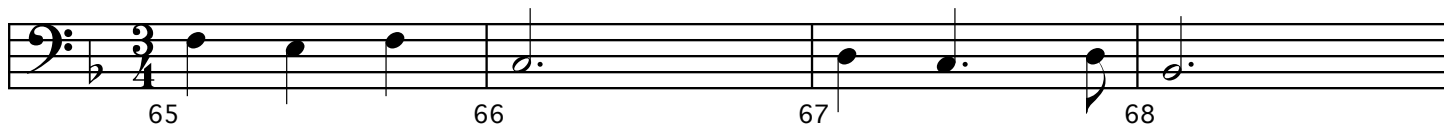
53 54 55 56

57 58 59 60


61 62 63 64

Copy this melody in TREBLE CLEF.

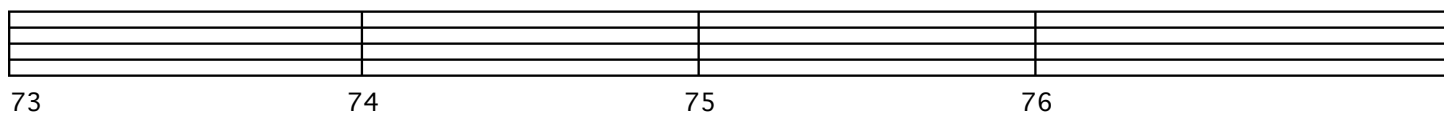
NAME ALL NOTES!



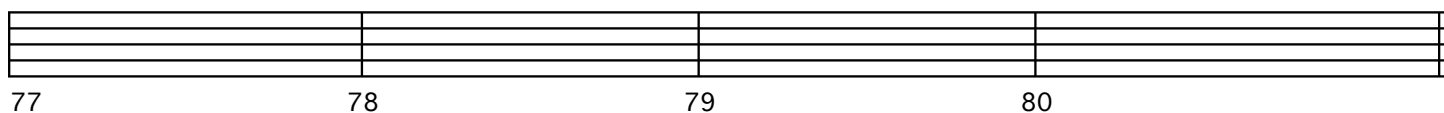
65 66 67 68



69 70 71 72



73 74 75 76



77 78 79 80

Copy exactly , the following leadsheet: "Summer of '78".