

Lesson 3 MODES (intro)

Below is a major scale written from the note C.

REMEMBER [W-W-H-W- W-W-H] ?

On the next staff, write the C major scale again, but write the fourth step one half step higher.

Major Scale

I II III IV V VI VII I

W W h W W W h

I II III IV# V VI VII I

Write another IV# scale from the note F.

MAJOR #IV SCALE = LYDIAN MODE

- Lydian +4

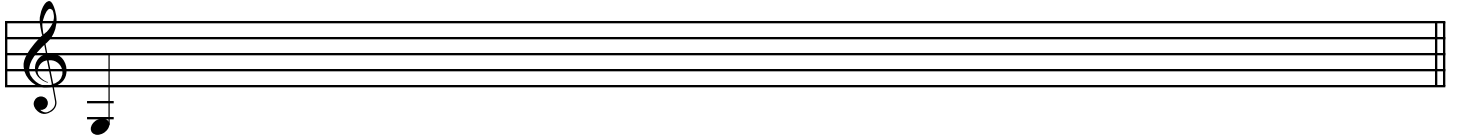
W W W h W W h

Lesson 3 Modes (intro)

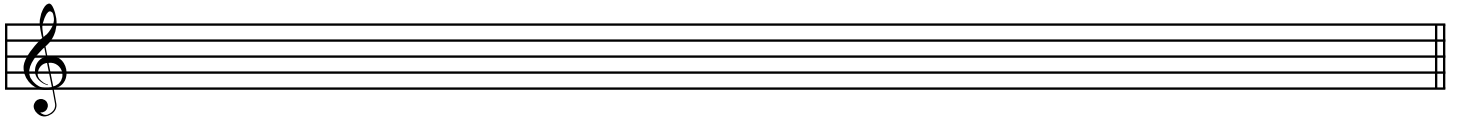
WRITE a G major scale here.

Write scale degrees above the notes.

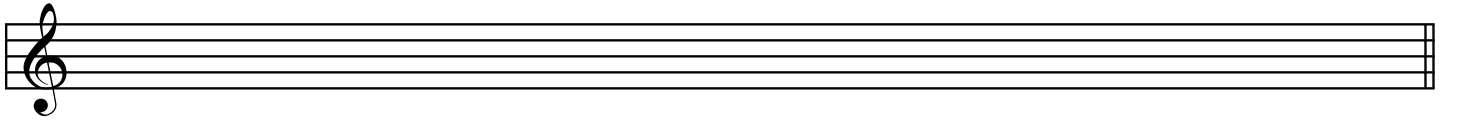
Include W W H W W W H
M2 M2 -2 M2 M2 M2 -2



Write a G scale again but WRITE VII ONE HALF STEP LOWER = bVII.



WRITE THE MAJOR bVII SCALE FROM F.

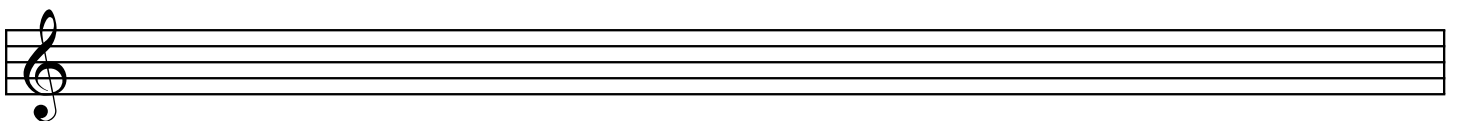


Major bVII scale = MIXOLYDIAN

I II III IV V VI **bVII** I

W W h W W h W

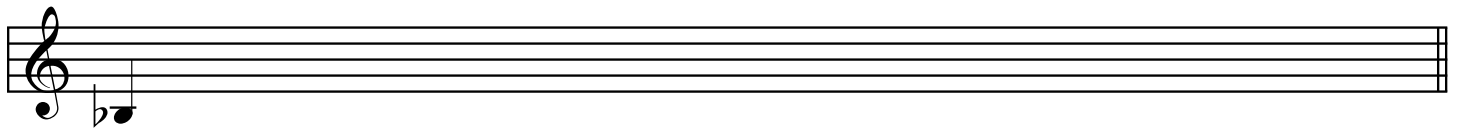
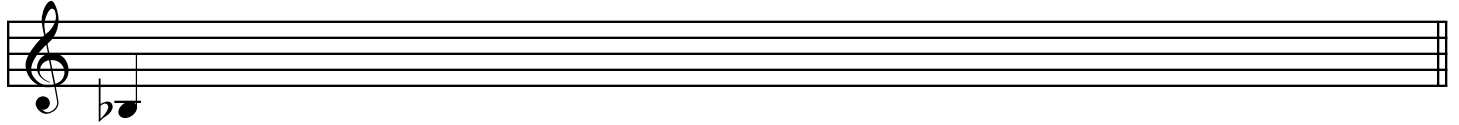
b7



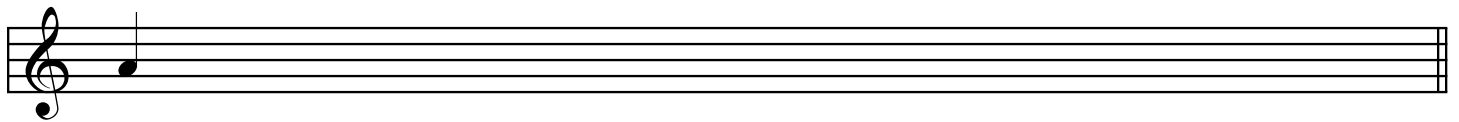
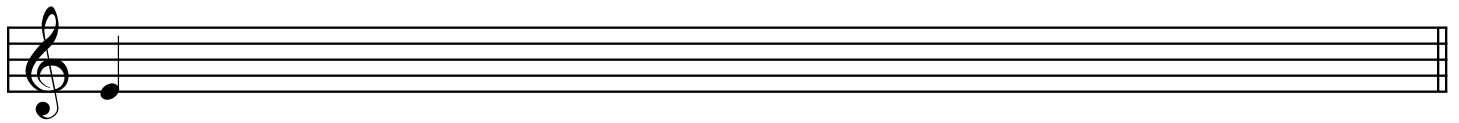
Lesson 3 Modes (intro)

Write a Bb Major scale and then write the Bb scale again with bIII and bVII degrees.

I II III IV V VI VII I



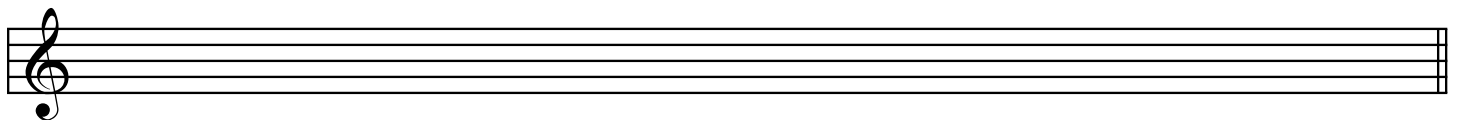
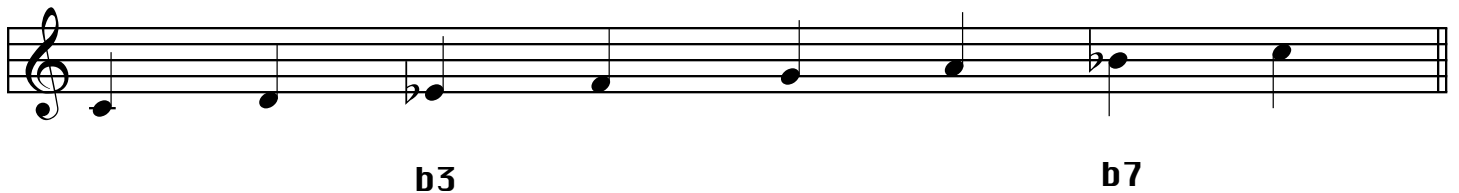
WRITE bIII, bVII scales from the given notes.



bIII/bVII SCALE = DORIAN (minor)

It is a Minor scale because the third degree is LOWERED**.

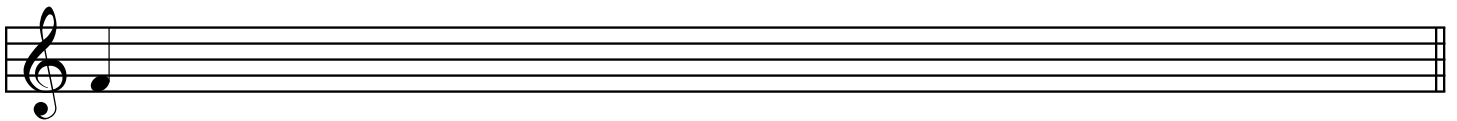
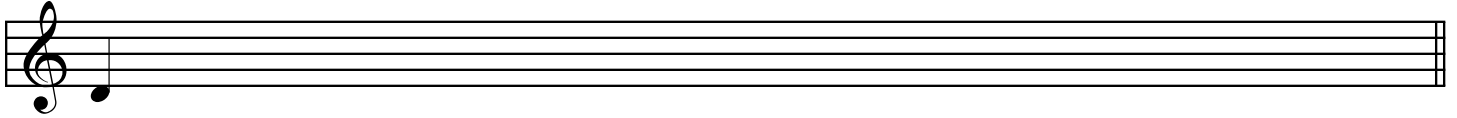
Dorian (minor)



Lesson 3 Modes (intro)

WRITE bIII, bVI, bVII scales from the notes below.

I II bIII IV V bVI bVII I

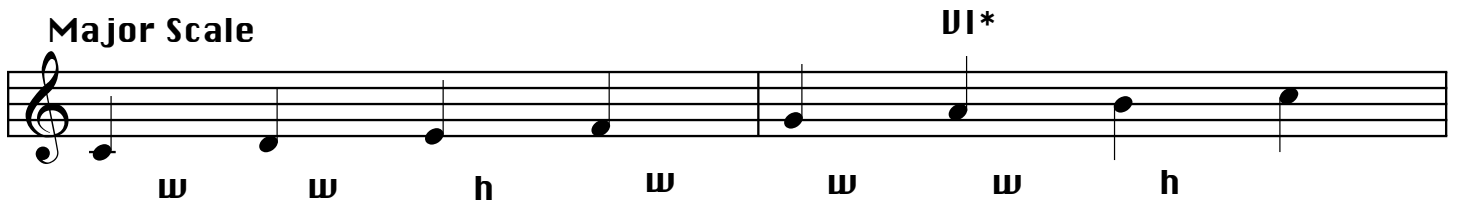


bIII, bVI, bVII SCALE = AEOLIAN (natural minor).

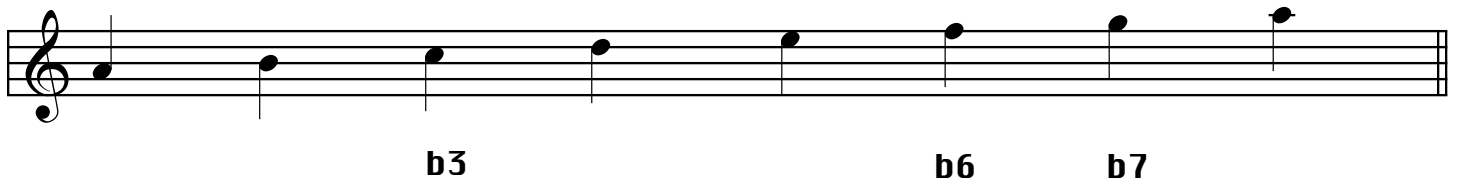
AEOLIAN is the **RELATIVE** minor of the major scale.

Begin and end any major scale from the VI degree and you will produce the natural minor or Aeolian

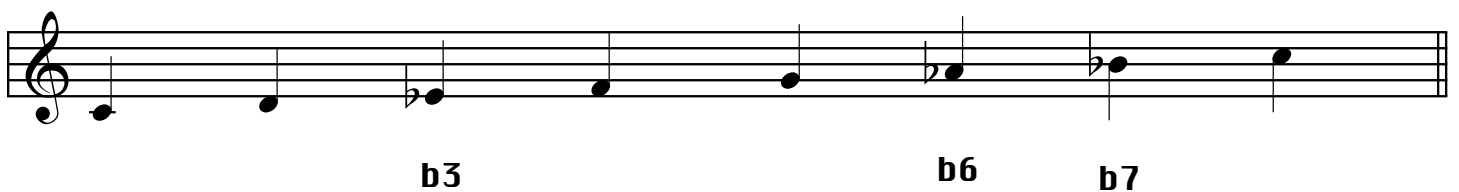
Major Scale



A natural minor (Aeolian) = Relative minor scale of C major.



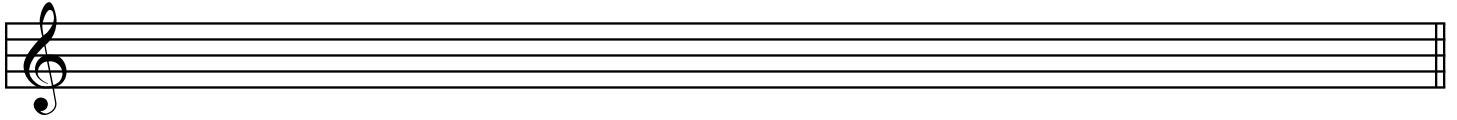
Aeolian Scale from C.



Lesson 3 Modes (intro)

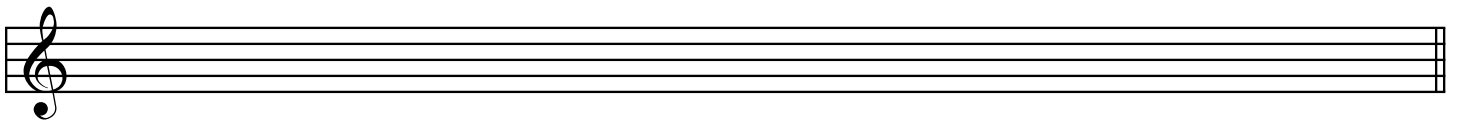
B major Scale: B(I) C#(II) D#(III) E(IV) F#(V) G#(VI) A#(VII) B(I)

Write the RELATIVE MINOR (Aeolian) scale below.



Ab major scale: Ab(I) Bb(II) C(III) Db(IV) Eb(V) F(VI) G(VII) Ab(I)

Write the RELATIVE MINOR SCALE below.



IS THIS AN AEOLIAN SCALE ??? Write the whole steps and half steps.



PHRYGIAN MODE = b2, b3, b6, b7

Below is an example of the Phrygian Mode from the note C.

Phrygian



b2

b3

b6

b7

Write a Phrygian Mode from the following start notes.

I

bII

bIII

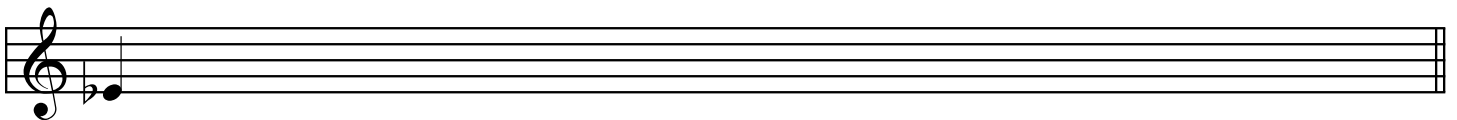
IV

V

bVI

bVII

I

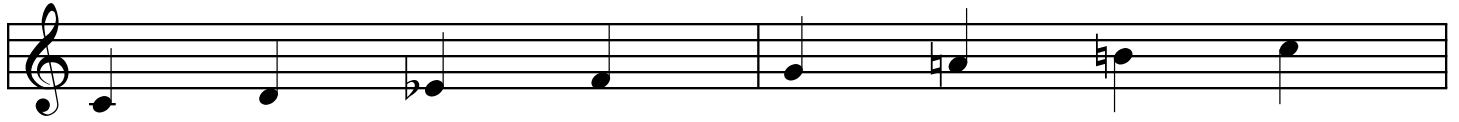


Lesson 3 Modes (intro)

MELODIC MINOR

ASCENDING = b3

DESCENDING = b3, b6, b7 (natural minor)



b3

Natural Sign

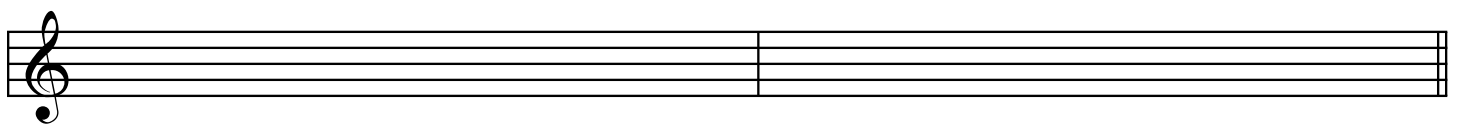
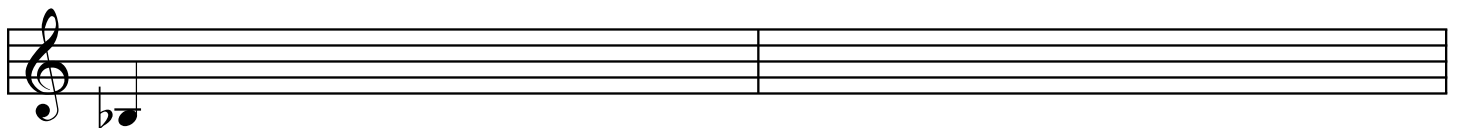
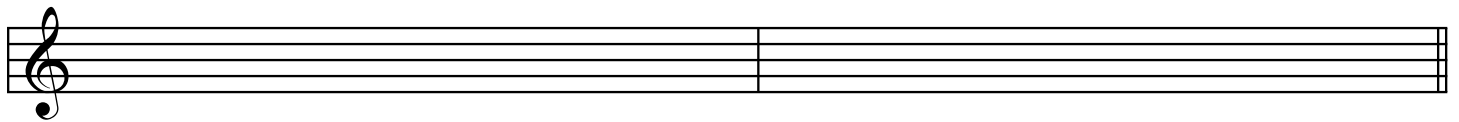
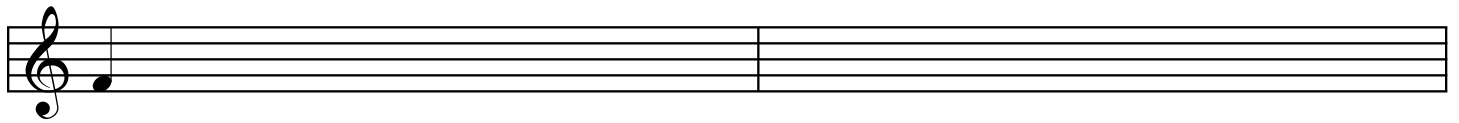


b7

b6

b3

WRITE Melodic Minor Scales from the following notes. Ascending and Descending!



Lesson 3 Modes (intro)

MELODIC MINOR SCALE

