

Lesson 2 Scales: Whole Step, Half Step

Chromatic Scale All Half Steps Identify the notes.
Write in BASS CLEF.

1 Octave = 12 semi toni

2
A A# B...

5

Intervals of a MAJOR SCALE from any note:
Whole-Whole-Half-Whole-Whole-Whole-Half

W-W-H-W-W-W-H

Major Scale

8
W W h W W W h

Write the interval in the indicated direction.

: w h w h w h h w

28 w w h h w h w h

Write major scales from the given start notes.

REMEMBER: W-W-H-W-W-W-H

The scales below are your FLAT KEYS.

Use only flats to create your major scales.

Major Scale from F

A musical staff in treble clef showing the notes of a major scale starting on F. The notes are: F (labeled I), G (labeled II), A (labeled III), Bb (labeled IV), C (labeled V), D (labeled VI), E (labeled VII), and F (labeled I). Below the staff, the rhythmic pattern W-W-H-W-W-W-H is written under each corresponding note. The number 36 is written below the first note.

A musical staff in treble clef with a Bb key signature. The first note is Bb, labeled I. The staff is otherwise empty. The number 38 is written below the first note.

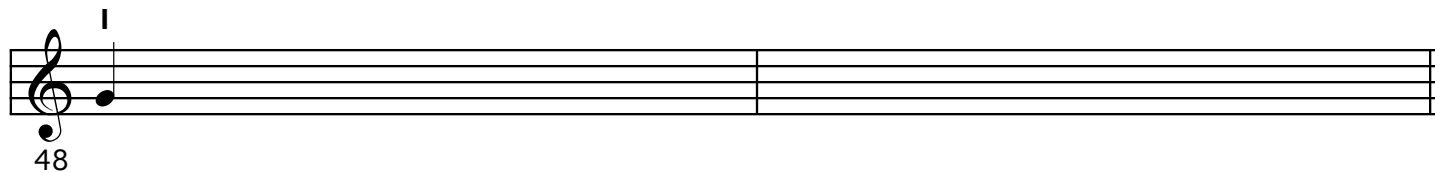
A musical staff in treble clef with an Eb key signature. The first note is Eb, labeled I. The staff is otherwise empty. The number 39 is written below the first note.

A musical staff in treble clef with an Ab key signature. The first note is Ab, labeled I. The staff is otherwise empty. The number 42 is written below the first note.

A musical staff in treble clef with a Gb key signature. The first note is Gb, labeled I. The staff is otherwise empty. The number 44 is written below the first note.

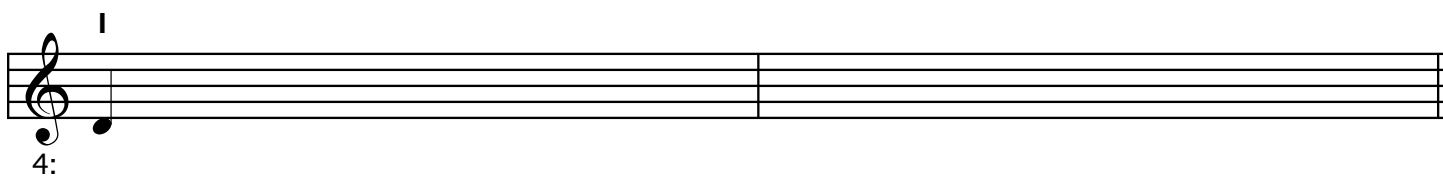
A musical staff in treble clef with an Fb key signature. The first note is Fb, labeled I. The staff is otherwise empty. The number 46 is written below the first note.

The scales are your SHARP KEYS.
Use only SHARPS to create your major scales.



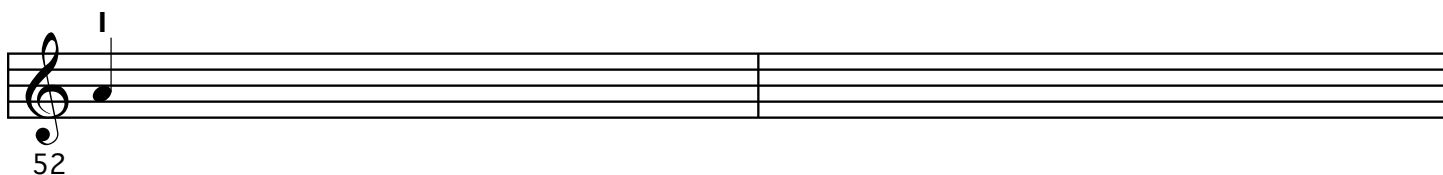
A musical staff in treble clef with a sharp sign above the first line. The first measure contains a quarter note on the first line. The staff is divided into two measures.

48



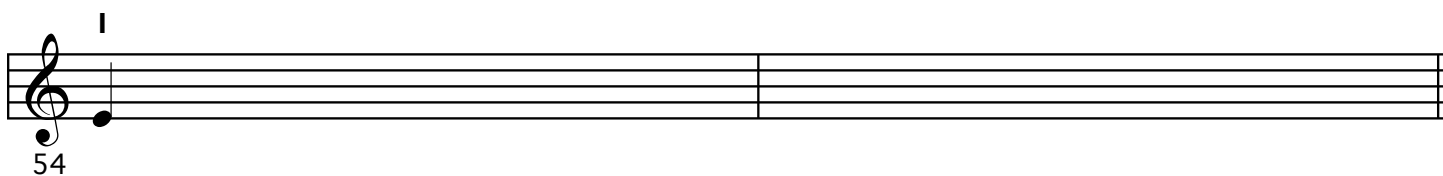
A musical staff in treble clef with a sharp sign above the first line. The first measure contains a quarter note on the second line. The staff is divided into two measures.

49



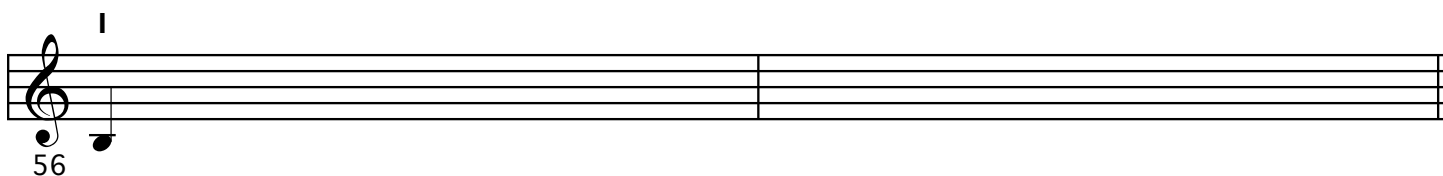
A musical staff in treble clef with a sharp sign above the first line. The first measure contains a quarter note on the second space. The staff is divided into two measures.

50



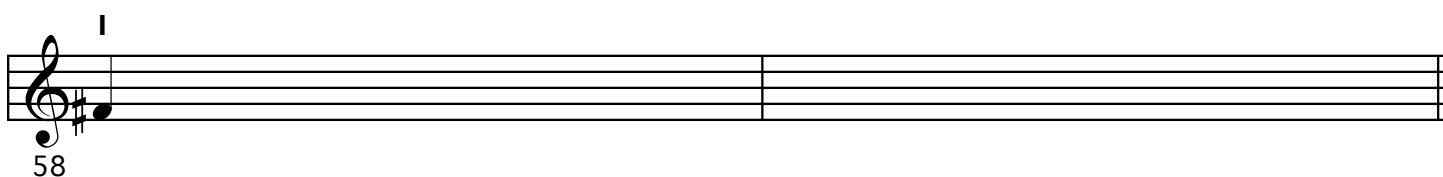
A musical staff in treble clef with a sharp sign above the first line. The first measure contains a quarter note on the third line. The staff is divided into two measures.

51



A musical staff in treble clef with a sharp sign above the first line. The first measure contains a quarter note on the third space. The staff is divided into two measures.

52



A musical staff in treble clef with a sharp sign above the first line and a sharp sign on the first line. The first measure contains a quarter note on the first line. The staff is divided into two measures.

53

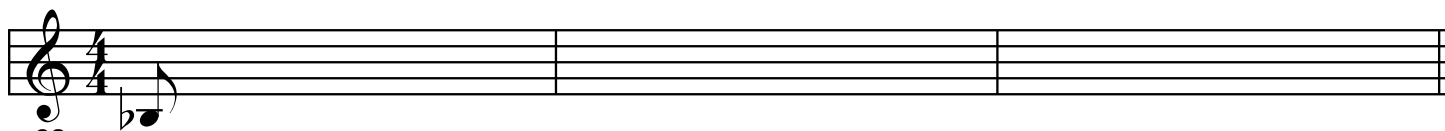
Write one octave CHROMATIC SCALES ascending and descending from the following notes.

Name and write 7 the notes of the chromatic scale from F.

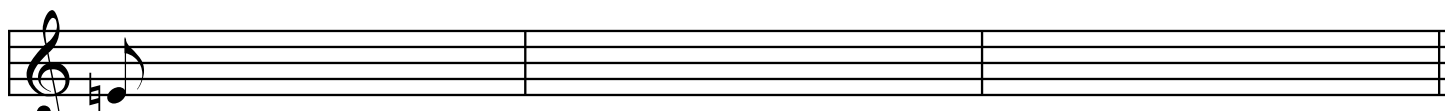


5:

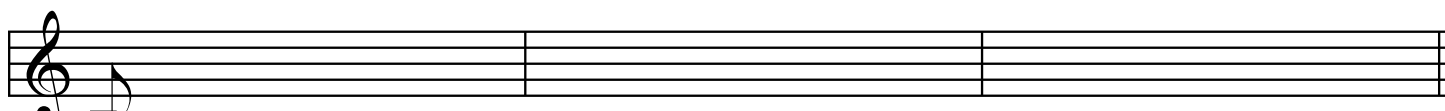
1 Octave = 12 semi toni



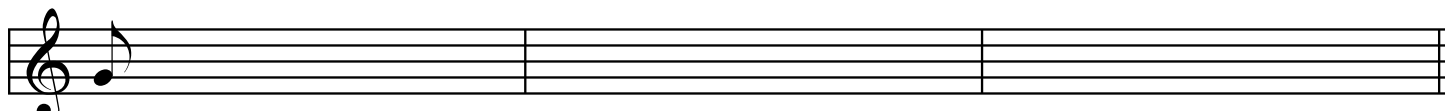
63



66



69



72